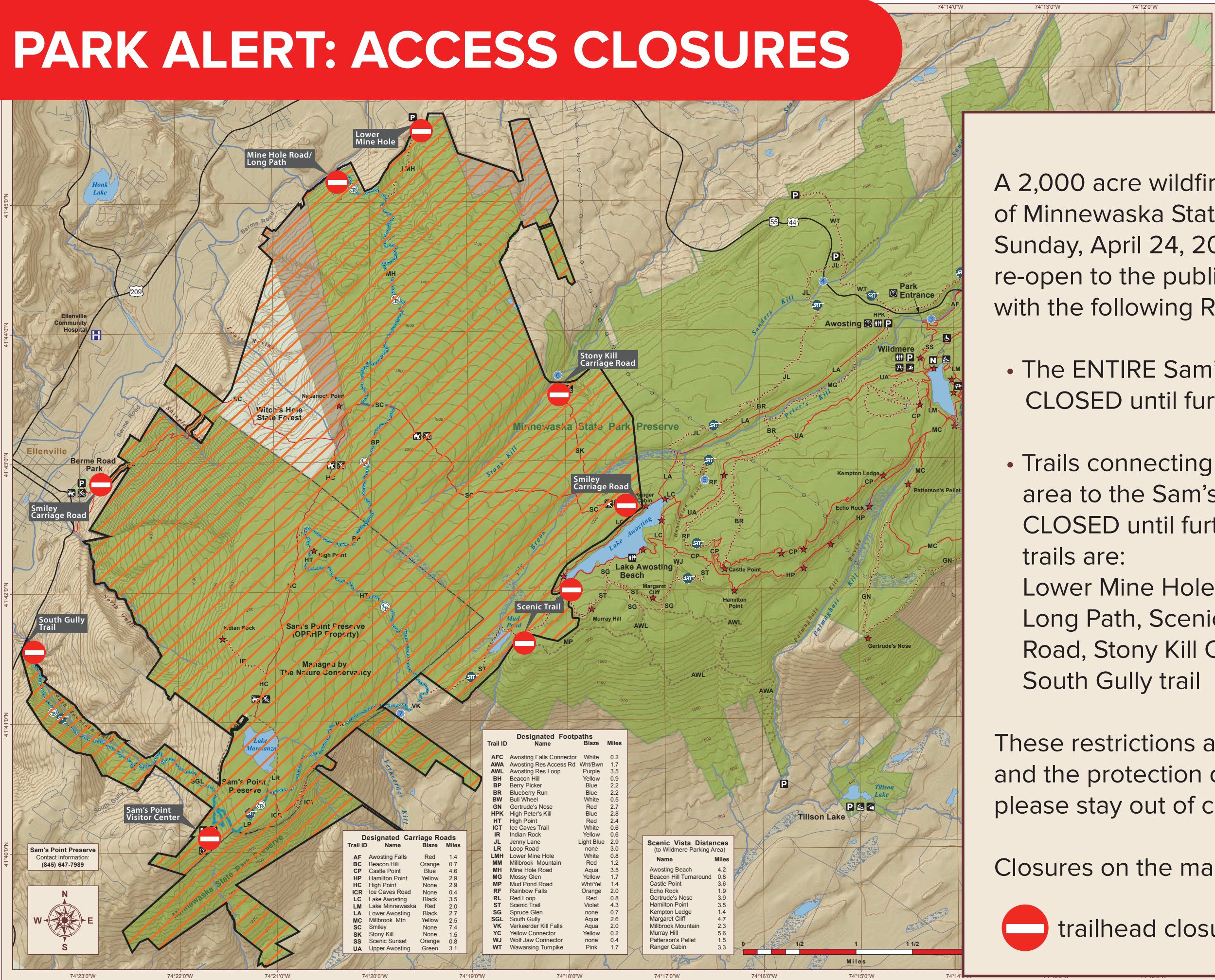


# PARK ALERT: ACCESS CLOSURES



A 2,000 acre wildfire had forced the closure of Minnewaska State Park Preserve since Sunday, April 24, 2016. Minnewaska will re-open to the public on Saturday, April 30 with the following RESTRICTIONS:

- The ENTIRE Sam's Point area will remain CLOSED until further notice.
- Trails connecting the Lake Minnewaska area to the Sam's Point area will remain CLOSED until further notice. Those closed trails are:  
Lower Mine Hole trail, Mine Hole Road/ Long Path, Scenic Trail, Smiley Carriage Road, Stony Kill Carriage Road and South Gully trail

These restrictions are in place for your safety and the protection of sensitive resources; please stay out of closed areas.

Closures on the map are indicated by:

