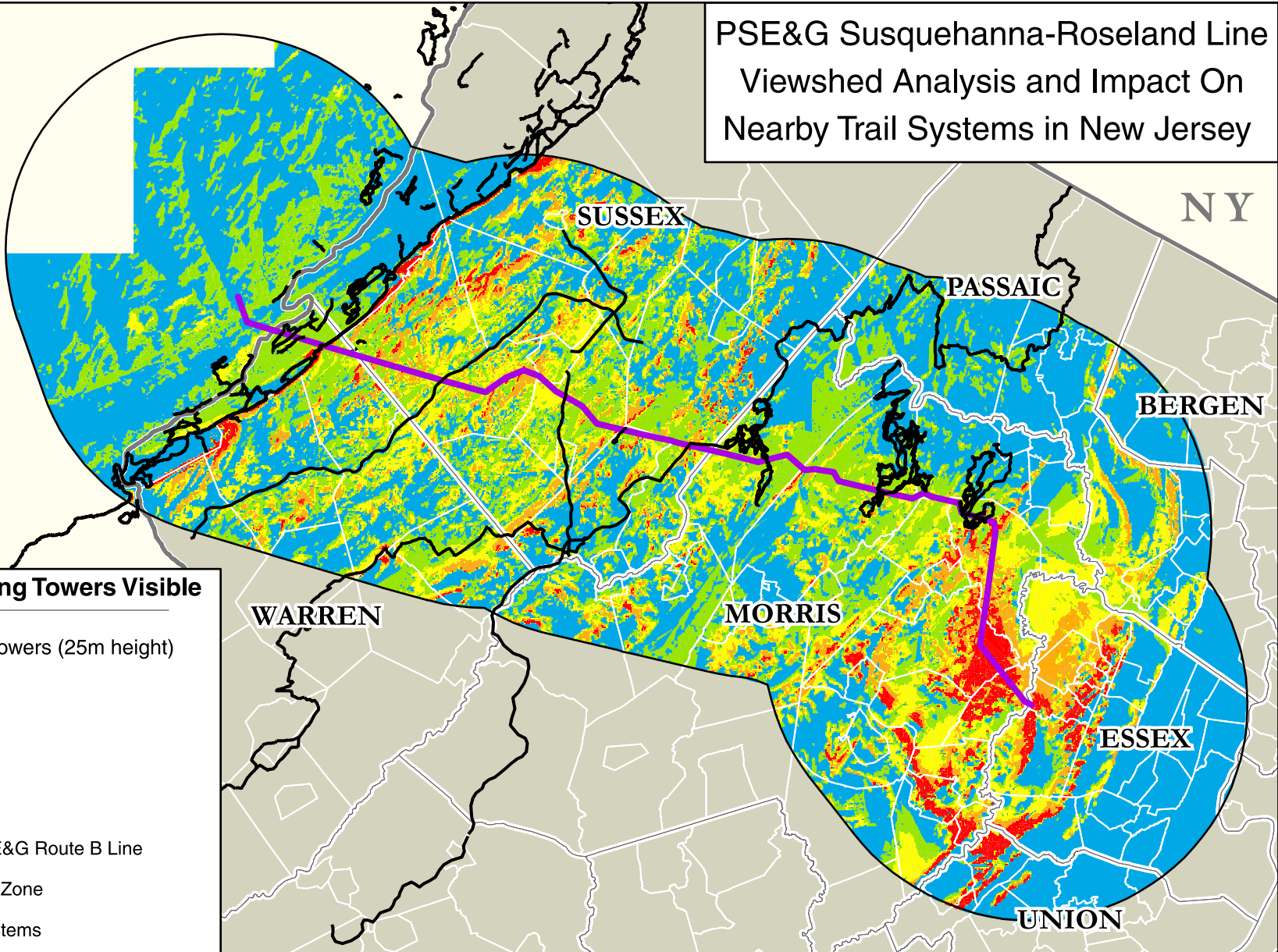


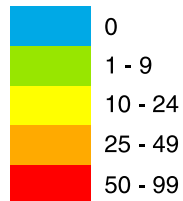


PSE&G Susquehanna-Roseland Line Viewshed Analysis and Impact On Nearby Trail Systems in New Jersey



Number of Existing Towers Visible

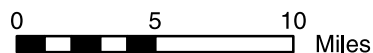
Number of Existing Towers (25m height)



Proposed PSE&G Route B Line

10-mile Buffer Zone

Major Trail Systems



The viewshed was developed in ArcView 9.3 using the USGS National Elevation Dataset DEM and GIS data obtained from the Highlands Council. It should be noted that DEMs can include road grades but do not show most human artifacts (i.e. buildings, walls, etc.) or vegetation.

Copyright © 2008 New York-New Jersey Trail Conference, Inc.

	Land area within a 10 mile buffer of the proposed route from which a tower would be visible								
	At least 1 Tower		At least 10 Towers		At least 25 Towers		At least 50 Towers		Total Acres
	Acres	%	Acres	%	Acres	%	Acres	%	
Existing Towers	388558	49	190314	24	83262	10	23789	3	792976
Proposed Towers	459926	58	301331	38	174455	22	87227	11	792976
Change	+71368	+9	+111017	+14	+91193	+12	+63438	+8	